

**CERTIFIED LAND CORNER RECORDATION**

DESCRIPTION OF CORNER EVIDENCE FOUND, AND ORIGINAL RECORD (if known)

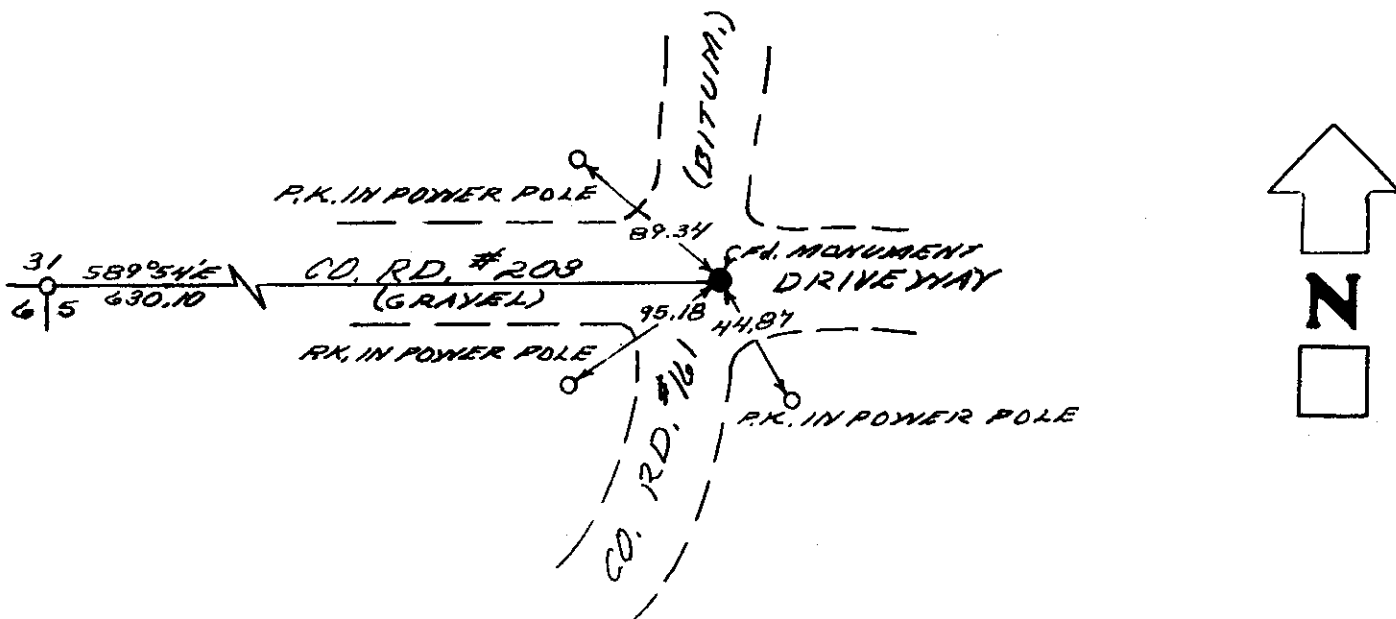
T. 13 N.  
 31 | 32  
 6 | 5  
 R. 60 W.

FOUND: 1/2" REBAR FIRMLY SET 8.1' BELOW ASPHALT

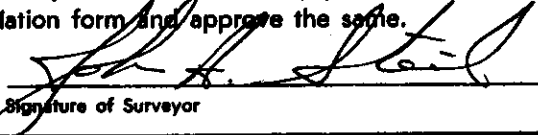
DESCRIPTION OF MONUMENT AND ACCESSORIES ESTABLISHED  
 TO PERPETUATE THE ORIGINAL LOCATION OF THIS CORNER:

SEE TIES BELOW

SKETCH, WITH COURSE AND DISTANCE TO ADJACENT CORNER IF DETERMINED IN THIS SURVEY.  
 (May Sketch or Paste Reproduction on Reverse Side.)



I, JOHN A STEIL certify that I have carefully performed or reviewed the work done on the diagrammed corner as reported on this recordation form and approve the same.

  
 Signature of Surveyor L.S. 2500  
Registration No.

STATE OF WYOMING,  
 Office of Clerk and Recorder,  
 County of Saratoga

740801

This "corner record" was filed for record on the \_\_\_\_\_ day of APR 12 1984, 19\_\_\_\_, was noted on the cross-index plat and is assigned page No. \_\_\_\_\_, in book No. \_\_\_\_\_.

County Official			
Cross Index No. <u>2-5</u>	T. <u>13 N.</u>	R. <u>60 W.</u>	Mer. <u>6<sup>th</sup></u>
_____	T. _____	R. _____	Mer. _____
_____	T. _____	R. _____	Mer. _____
_____	T. _____	R. _____	Mer. _____
_____	T. _____	R. _____	Mer. _____
_____	T. _____	R. _____	Mer. _____
_____	T. _____	R. _____	Mer. _____

2-5 13-60